

Product Data Sheet

SmartCem Emissions Monitoring Software

Emission Monitoring Software

SmartCem Emissions Monitoring Software provides the complete solution to data gathering and analysis on Codel-based monitoring systems.

With a simple installation and set-up routine, the program takes only minutes to load and configure and comes with a comprehensive on-board help feature. For complete peace of mind there's also a telephone help line.

Real-Time Displays

Using a serial link to communicate with the sensors SmartCem updates the main data screen every 30 seconds to keep the user aware of the current situation on plant, while alarm mimics warn the operator of high emission levels.

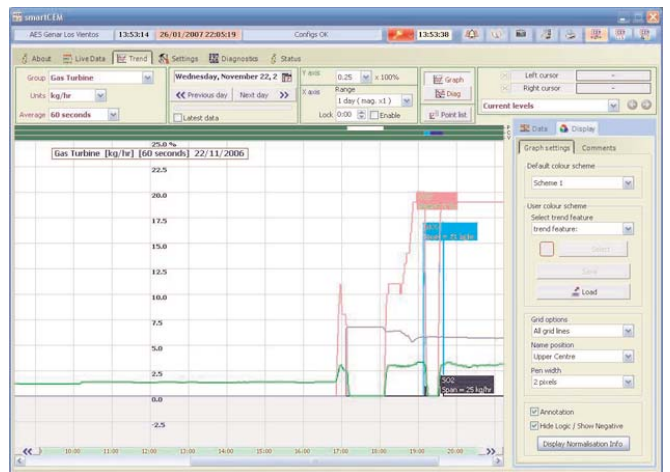
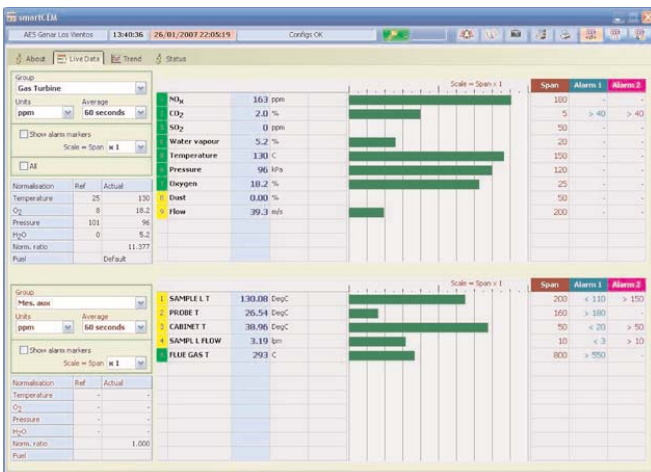
Incoming data is displayed in numerous formats - ppm, mg/Nm3, mg/m3, kg/hr etc. - and the change of format is instantaneous.

- detailed customised reports for Environmental Agencies (meets IPR requirements)
- user-configurable real-time & historical graphs; data export to popular applications
- multi-user networking capability; real-time normalisation of data; indefinite data-logging
- easy installation & set-up; user-friendly operation; suitable for Windows 9x/NT/2000/XP

Graphs

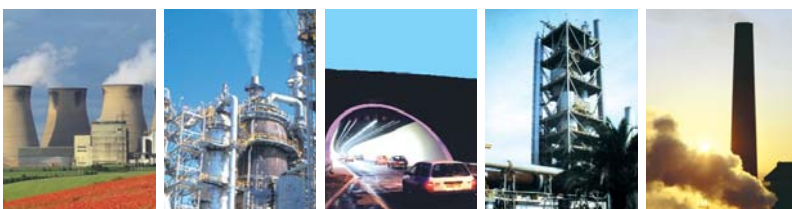
A key feature of SmartCem is the provision of real-time and historical graphs providing detailed analysis of emissions data; one useful feature enables the user to highlight a period of time on the graph and obtain the average emissions. Data is easy to read and is configurable to individual operator requirements.

Other features include 2, 5 & 10 day view, hard copy output, custom line colours and graph annotation.



Total Solutions - Total Confidence

SmartCem



System Diagnostics

To maximise availability of measurement it is necessary to limit instrument downtime. SmartCem provides up-to-the-minute system diagnostics for Codel emission monitors. In the event that sensors require maintenance SmartCem will inform the operator immediately. The unique 'diagnostic trend' graph shows individual sensor performance over time and the on-board diagnostic maintenance facility produces a maintenance history with suggested service strategies.

Operators providing a telephone modem may arrange for Codel engineers to remotely contact the host pc on a regular basis, to ensure that the monitoring system is working efficiently. If it isn't, minor problems can be isolated and corrected where possible or a service visit arranged from one of our skilled technicians.

Data-Logging

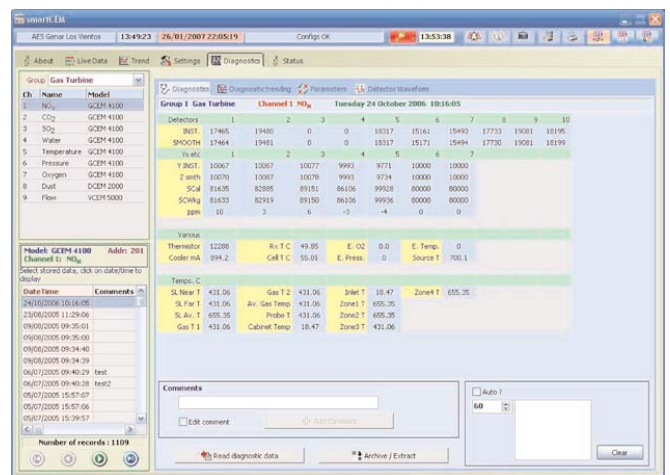
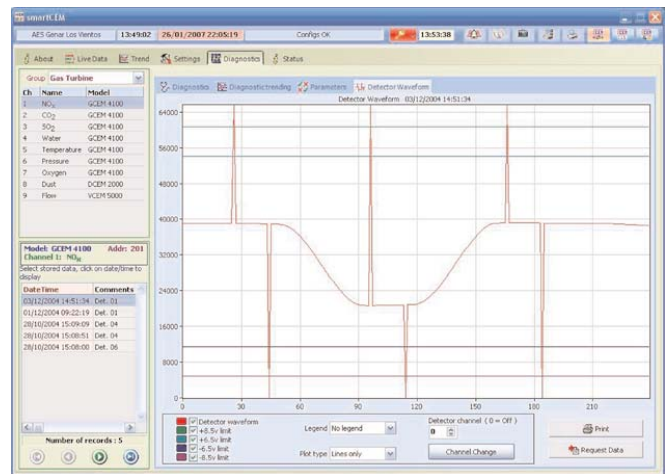
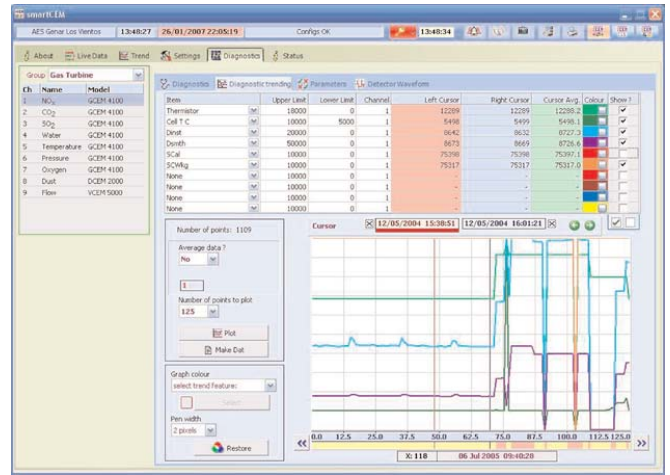
The main function of the pc is to act as a complex data logger for the incoming emissions data. Data is compressed so that no more than five years data can be stored directly on the hard drive for immediate retrieval. Data may be archived onto other media if hard disk space is required for other operations.

Networking

SmartCem may be accessed by other users on a network to enable them to take advantage of all its features.

Instrument Integration

SmartCem has the ability to take inputs from other non-Codel instrumentation forming part of the emissions monitoring system and to normalise that data in real-time for oxygen, temperature, pressure and moisture, as required by many environmental regulators. Furthermore, if one of the sensors providing normalising data becomes defective, SmartCem has the ability to 'repair' corrupted data retrospectively.



SmartCem

CODEL International Ltd.
Station Building, Station Road
Bakewell, Derbyshire DE45 1GE
England

Tel: +44 (0) 1629 814 351
Fax: +44 (0) 8700 566 307
e-mail: sales@codel.co.uk
web site: www.codel.co.uk

Distributor :

